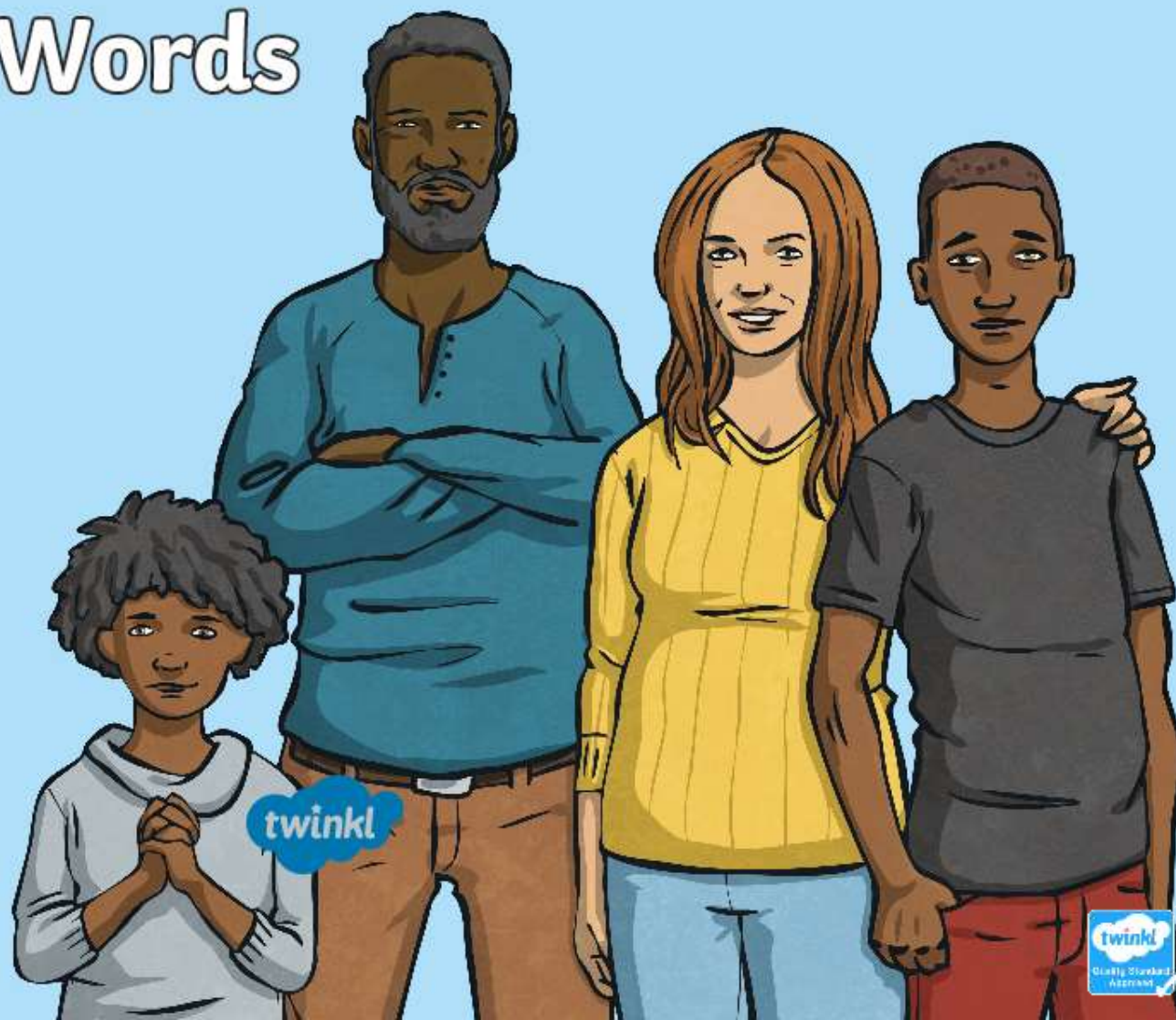


Word Families Based on Common Words

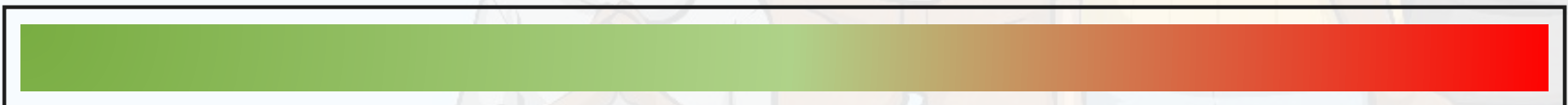


The particular prefix that we are going to look at this week is...

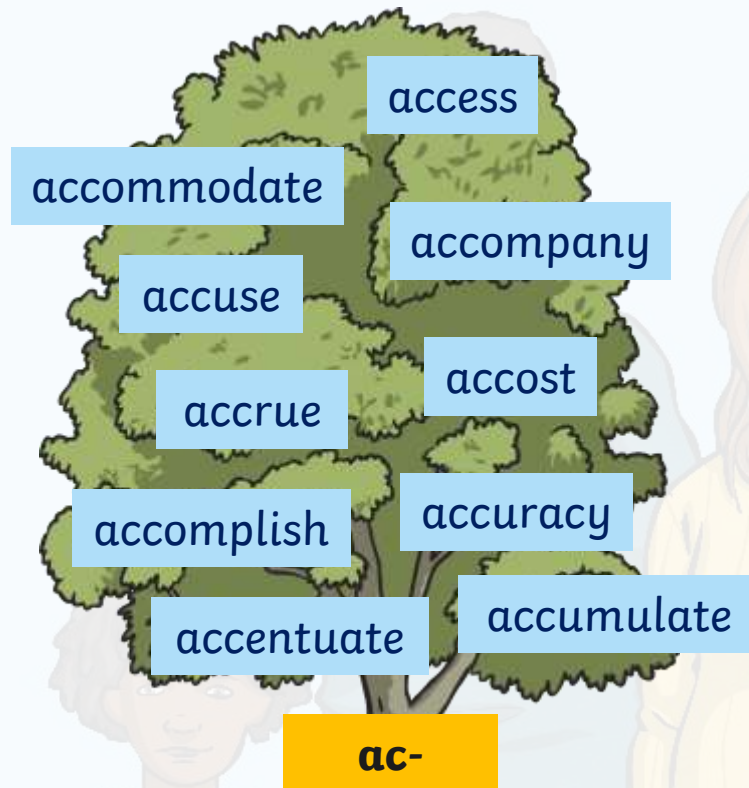
ac-

ac- is a Latin prefix often associated with words that mean **to**, **towards**, **near** or **in addition to**.

Working with a partner, how many words beginning with the prefix '**ac-**' can you think of in the next minute?



How many 'ac-' words did you think of?
Did you think of any of your spelling words?



Do you know the meanings of all of your words?

Let's choose a word together and play spin the word!
Work in pairs on your whiteboards. If the spinner lands on a...

1

Find any smaller words within the word.

2

Write a definition for the word.

3

Sky-write the word in the air with your finger.

4

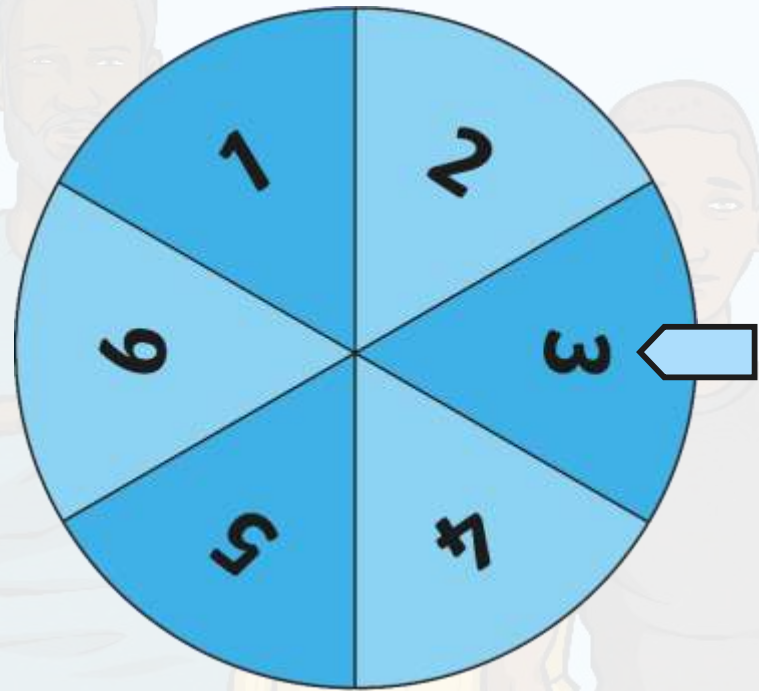
Break the word into syllables.

5

Speed-write the word as many times as you can in a minute.

6

Use the word in a sensible sentence.



(You will need to
use a dice at home)

Here are this week's spellings to practise.

accommodate

accrue

accompany

accuracy

access

accomplish

accuse

accumulate

accost

accentuate

